

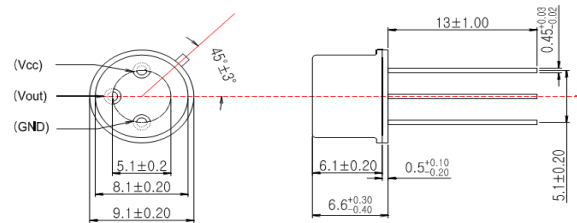
UV Sensor Module GUVC-T21GH

- Features**
- Single Supply Voltage Operation
 - Amplified Voltage Output
 - High Sensitivity and Good Solar Blindness
 - Small and Compact Size



- Applications**
- Pure UV-C Monitoring
 - Sterilization Lamp Monitoring

Outline Diagrams and Dimensions(unit:mm)



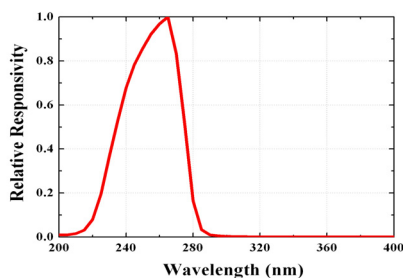
Absolute Maximum Ratings

| Parameter | Symbol | Min. | Max. | Unit | Remark |
|-----------------------|------------------|------|------|------|----------------|
| Storage Temperature | T _{st} | -40 | 90 | °C | |
| Operating Temperature | T _{op} | -30 | 85 | °C | |
| Supply Voltage | V _{cc} | | 5.5 | V | |
| Soldering Temperature | T _{sol} | | 260 | °C | within 10 sec. |

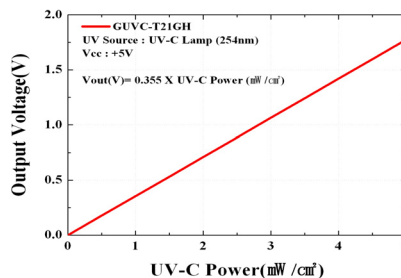
Characteristics (at 25°C)

| Parameter | Symbol | Min. | Typ. | Max. | Unit | Remark |
|--------------------------|------------------|------|-------|------|--------------------|-----------------------|
| Supply Voltage | V _{cc} | 1.8 | | 5.5 | V | DC |
| Supply Current | I _Q | | 50 | | μA | |
| Responsivity | R _p | | 0.6 | | mV/nW | at 254 nm |
| Spectral Detection Range | λ | 220 | | 280 | nm | 10% of R _p |
| Output Voltage | V _{out} | | 0.355 | | V | 1 mW/cm ² |
| Offset Voltage | V _{off} | | 0.01 | | V | |
| Detection Power Range | P | 0 | | 14.1 | mW/cm ² | V _{cc} =5V |
| Rising Time | T _r | | 3 | | ms | |

Responsivity Curve



Output Voltage along UV Power



Caution ESD can damage the device hence please avoid ESD.

深圳市新世联科技有限公司